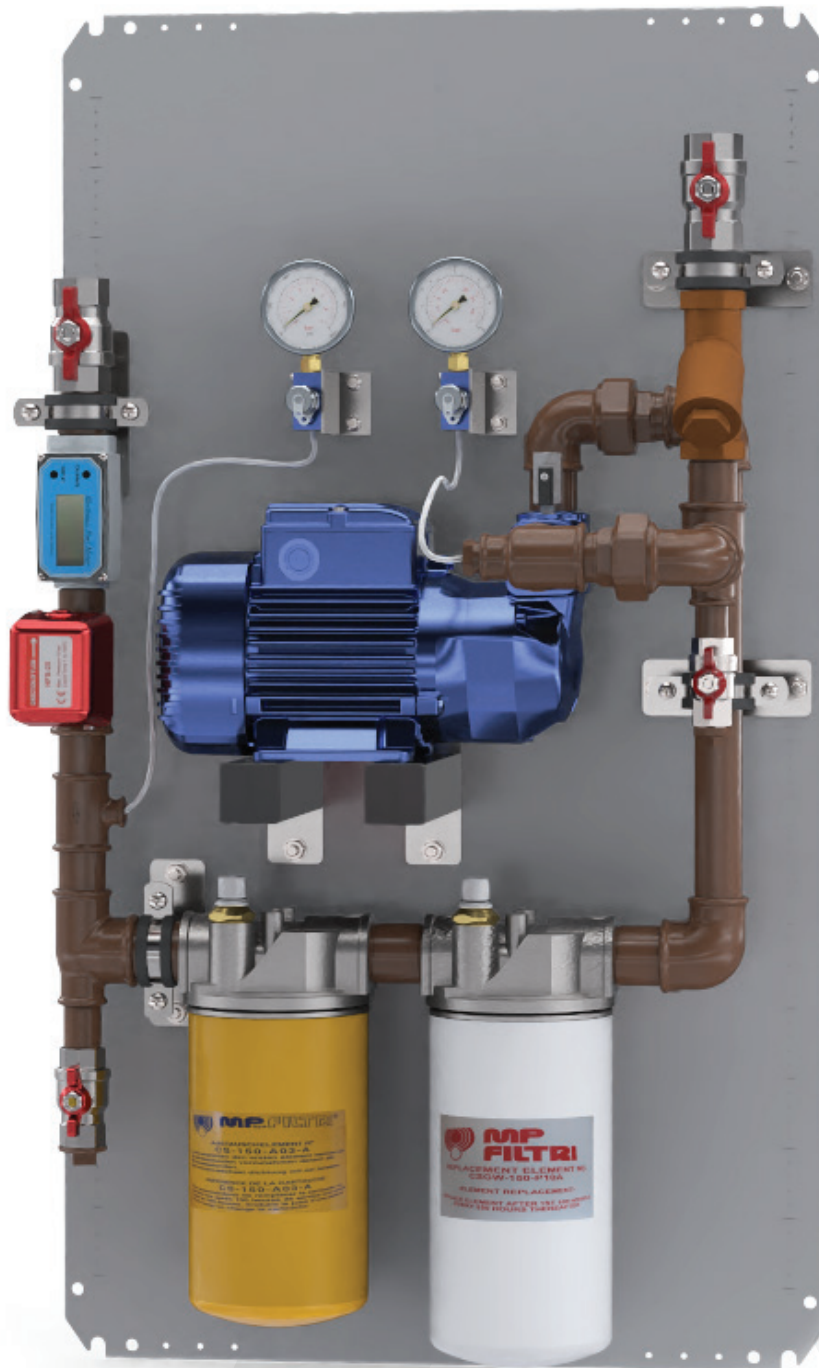


Product Datasheet

50 LPM Fuel Polisher Set | Tank Mounted

Atlantis Product Code: PUM.FPS.T-50

Atlantis
StoraFuel Product



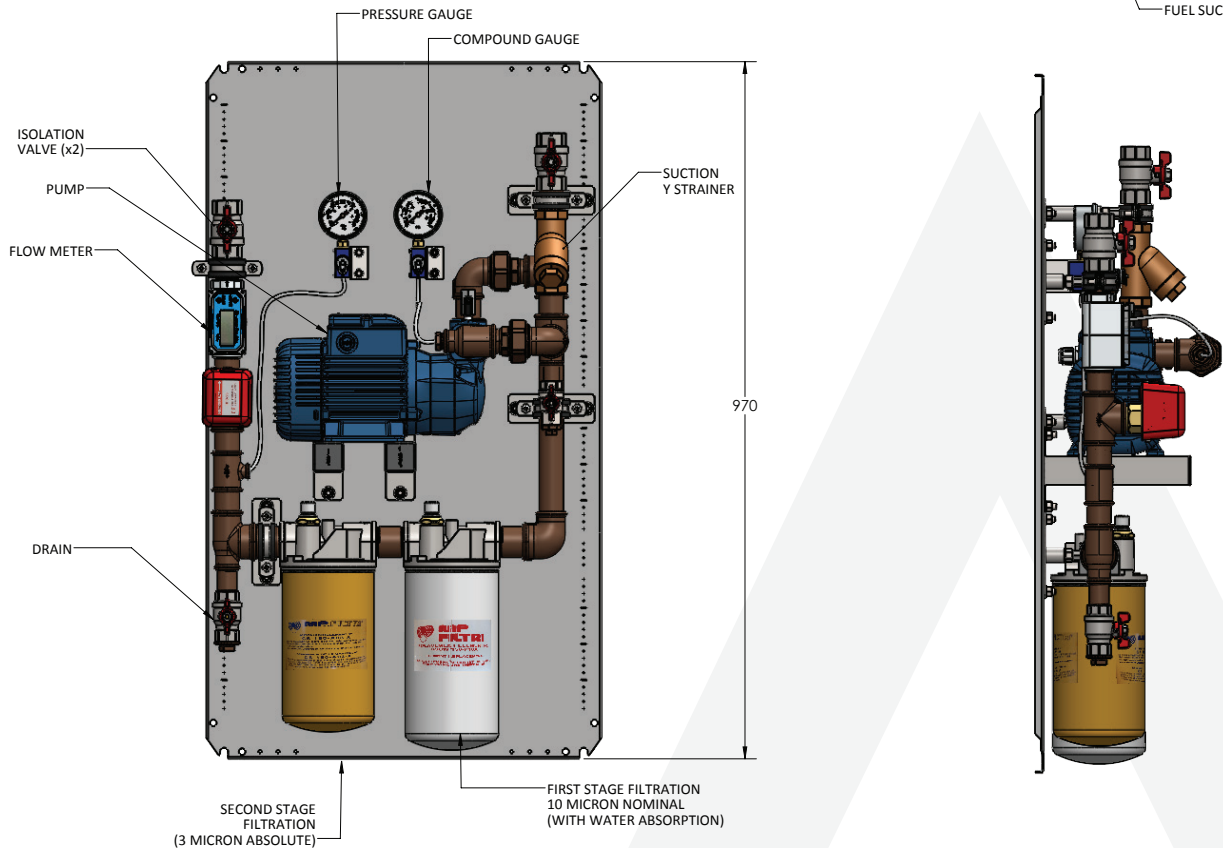
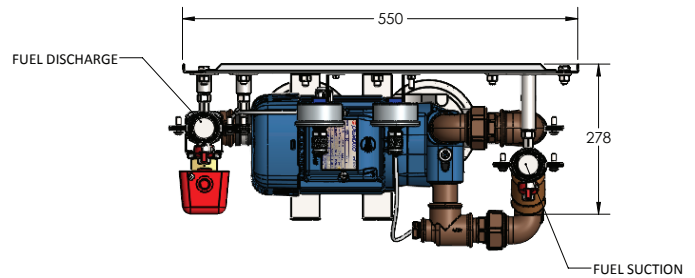
Product Datasheet

50 LPM Fuel Polisher Set | Tank Mounted

Atlantis Product Code: PUM.FPS.T-50

FUEL POLISHER FOR TANK MOUNT

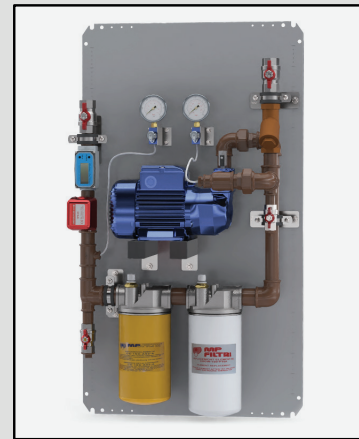
Designed to maintain fuel at the clean oil standard
ISO4406:2017 - 18/16/13 particle count / less
than 200ppm water content by 2 stage filtration
process.



COMPONENTS

- Single phase 50Hz CKm80 self priming liquid ring pump.
- Flow rate up to 50 l/min – see next page for pump details.
- First stage fuel filtration to 10 micron nominal with water absorption.
- Second stage fuel filtration to 3 micron absolute.
- Both filters have internal bypass and the heads are fitted with:
 - Visual Differential pop up blockage indicator.
 - Pressure gauge with traffic light coloured regions indicating efficiency of the filter.
- Mesh screen Y strainer on inlet to remove large particulates.
- Particle counter test points.
- Digital display Flow Meter.
- Paddle Flow switch.
- Check Valves on inlet and outlet.
- Compound and Pressure Gauges.
- Isolation valves on inlet and outlet.
- Drain valve.

Control Panel mounted locally – see next page for details.



CONTROL PANEL

- Locally mounted adjacent to Fuel Polisher.
- HAND / AUTO selector switch for pump control.
- 7 day programmable digital timer to automatically run the pump at defined schedules.
- 4 volt free SPDT contacts: Safety alarm, overload relay of pump, level alarm and power failure.
- Panel will alarm and STOP pump if no flow or bund float switch triggered.
- TEST / OFF / AUTO switch for alarm light and buzzer
- Top row lamps for Power, Pump Running, Pump Tripped & Alarm.

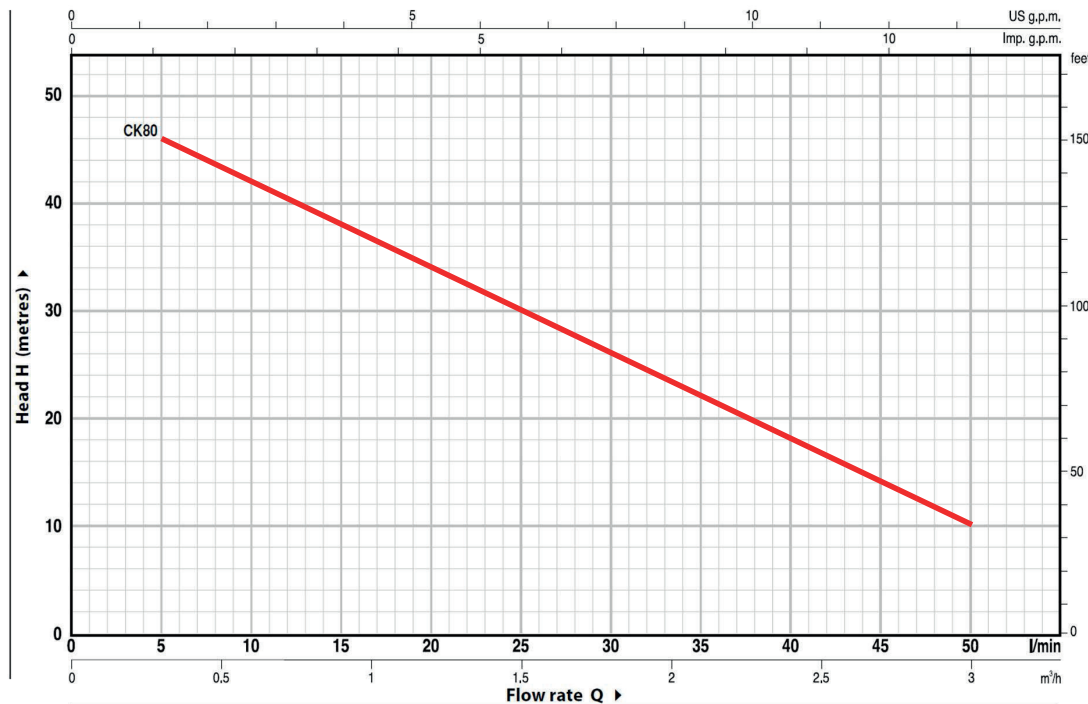


PUMP SPECIFICATIONS – Ckm80

- Flow rate: Up to 50 l/min (3 m³/h)
- Max. working pressure: 6 bar
- Liquid temperature: -10°C to +90°C
- Temperature of diesel: Up to +55°C
- Ambient temperature: Up to +40°C
- Motor: 0.55Kw 0.75HP Motor / Single phase 230 V (5.0 A) – 50 Hz with thermal overload protection,
- Continuous duty S1

Characteristic Curves And Performance Data

50 Hz n= 2900 min⁻¹ HS (Suction height) = 0 m



		Performance Data									
Head (H)	m	48	46	42	38	34	30	26	22	18	10
Flow Rate (Q)	m ³ /h	0	0.3	0.6	0.9	1.2	1.5	1.8	2.1	2.4	3
	l/min	0	5	10	15	20	25	30	35	40	50