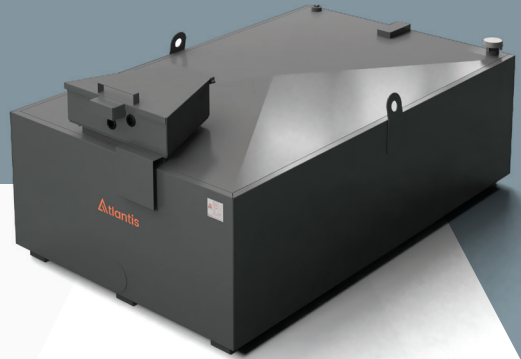


TAN.GFI-1315 Datasheet

1200 Litre Steel Bunded Imperium®
Generator Feed Tank



Capacity	1200 Litre
Length	2000mm
Width	1250mm
Height	600mm
Weight	Dry (empty): 255kg Wet (full): 1333kg

General information

A robust steel banded 1200 litre feed tank for supplying diesel, HVO, and compatible fuels to generator systems. Built with Imperium® Technology.

Imperium® Technology

Atlantis Tanks' own precision tank design combined with a highly-efficient manufacturing approach. The result is a well-engineered, and compliant generator feed storage solution. Patent Pending.

Suitable for

Storage and supply of Derv (white diesel), Gas Oil (Red Diesel) or HVO for standby and prime-power generators.

Tank Data

Outer tank dimensions:

(L) 2000mm x (W) 1250mm x (H) 600mm

Inner tank dimensions:

(L) 1870mm x (W) 1190mm x (H) 598mm

Brimful capacity: 1315 litres

Nominal capacity: 1249 litres

Usable capacity (c/w OPV): 1093 litres

Materials & Compliance

- ✓ Manufactured from structural steel grade S275 JR (BS EN10025-2:2004)
- ✓ Built to BS 799-5 standards for steel fuel storage tanks
- ✓ Compliant with the Control of Pollution (Oil Storage) (England) Regulations 2001 and devolved equivalents.

Connections

- ✓ 1 x 1.5" bund socket
- ✓ 1 x 2" tank to bund vent
- ✓ 1 x 2" bund to atmosphere vent

On fittings plate:

- ✓ 1 x 2" fill point c/w drip cap & chain
- ✓ 1 x 2.5" tank socket w/1" elbow connection (generator feed)
- ✓ 1 x 1" removable drop tube c/w foot valve & strainer - see page 4
- ✓ 1 x 1" tank socket (generator return)
- ✓ 2 x 1.5" tank sockets (e.g. for tank /bund probes)

Specification

- ✓ Removable Imperium® fittings plate
- ✓ Gauge/alarm mounting plate
- ✓ Full-length bearers for tank stability
- ✓ Lifting eyes for safe manoeuvring
- ✓ Small tin of "touch-up" paint
- ✓ Standard fit lockable top box



Imperium®
Technology



10 Year Tank
Warranty



High Quality
British-Made
Tanks



ISO 9001
Quality
Assurance

TAN.GFI-1315 Datasheet

1200 Litre Steel Bunded Imperium® Generator Feed Tank

Base

Install on a strong, level, impermeable base extending beyond the tank footprint, in line with the Control of Pollution (Oil Storage) (England) Regulations 2001 and devolved equivalents.

Exterior Finish

- ✓ 2 coats of specially formulated anti-rust coating for maximum protection
- ✓ Standard colour: Grey RAL 7015 (other finishes available on request)

Warranty

10 year warranty subject to T&Cs. Each tank supplied with a warranty manual.

You may also need

TANK GAUGES & ALARMS



Clock Face Tank Contents Gauge



Unitel (%) Fuel Tank Contents Gauge



O.L.E. C2020 Tank Gauge Kit 0.3m – 3m – c/w High/Low Level Alarms



O.L.E. T5020 Tank Gauge Kit 0.3m–3m – c/w Alarm



Spiral Float Tank Level Contents Gauge



R5 Relay Board



Battery ATEX Certified Oil Tank Bund Alarm – for Steel Tanks



Bund & High Level Probe For O.L.E Alarm Kits

HOSES (TO AND FROM GENERATOR)



Generator Hose c/w Quick Release Couplings 3/8" – 6mt (other lengths available)



Generator Hose c/w Quick Release Couplings 1/2" – 6mt (other lengths available)

TANK SECURITY & EXTRAS



2" Overfill Limiter for Steel Tanks



Manway Access Hatch



Tel: 0330 999 1100

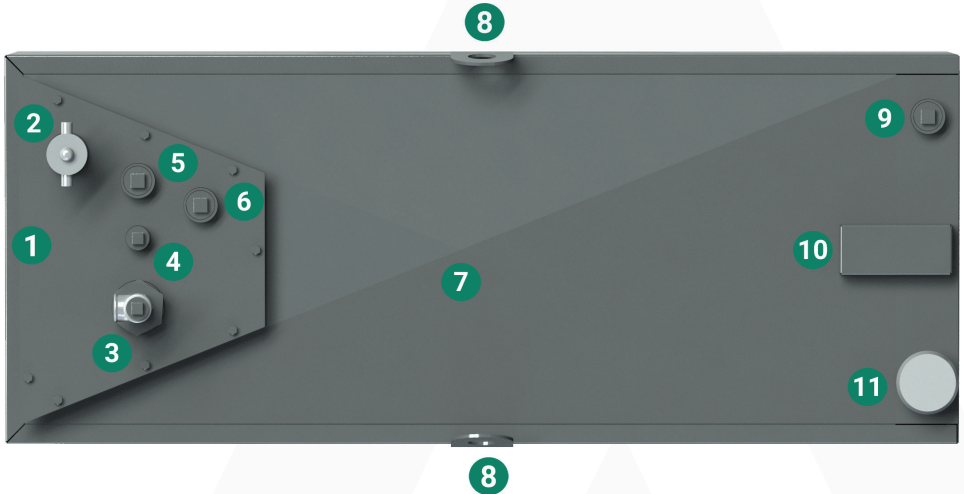
Email: sales@atlantistanks.co.uk

www.atlantistanks.co.uk

TAN.GFI-1315 Datasheet

1200 Litre Steel Bunded Imperium® Generator Feed Tank

Bird's Eye View - Generic for all Imperium® Generator Feed Tanks



1. Imperium® Generator Feed Tank Fitting Plate
2. 2" fill point c/w drip cap and chain
3. 2.5" tank socket with 1" elbow connection (generator feed)
4. 1" Tank Socket (generator return)
5. 1.5" tank socket (tank gauge)
6. 1.5" tank socket (spare, eg. bund probe)
7. Pitched roof for water run off
8. 2 x lifting eyes
9. 1.5" bund socket for optional bund alarm probe
10. 2" tank to bund vent
11. 2" bund to atmosphere vent with aluminium vent cap



Tel: 0330 999 1100

Email: sales@atlantistanks.co.uk

www.atlantistanks.co.uk

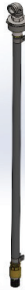
TAN.GFI-1315 Datasheet

1200 Litre Steel Bunded Imperium® Generator Feed Tank

Special Features

1. ATLANTIS' UNIQUE REMOVABLE DROP TUBE - INCLUDED AS STANDARD

Unique solution - gives clients benefits not available elsewhere



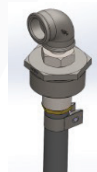
Purpose of Drop Tube:

- feeds fuel to power generator drawn from the bottom of the primary tank (suction feed)
- removable drop tube has non-return valve & a strainer

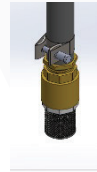
Benefits:

- Easy replacement of strainer if blocked by sludge
- Easy replacement of foot valve if faulty
- Reduced maintenance costs and less tank downtime.

Top of Drop Tube has a 1" Elbow connection on a 2.5" tank socket with a 1" drop tube:



Bottom of Drop Tube with non-return valve and strainer:



2. QUICK RELEASE CONNECTIONS - SUPPLIED AS STANDARD WITH HOSES

All our 1/2 inch and 3/8 inch diameter generator hose options are supplied with quick release connections. These are fitted to your tank feed and return before delivery.



Tel: 0330 999 1100

Email: sales@atlantistanks.co.uk

www.atlantistanks.co.uk